

**DESIGNED WITH MORE
POWER IN MIND**
an innovative landfill solar solution

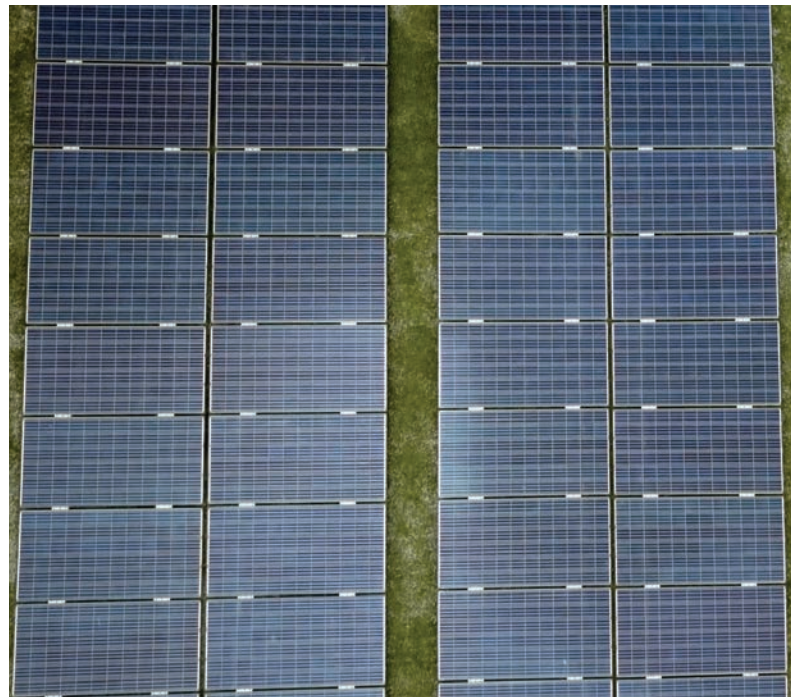


DESIGNED WITH MORE POWER IN MIND

Introducing PowerCap™, a patent-pending, revolutionary solar system for landfills and impoundments. PowerCap provides the latest in dual glass panel technology, direct surface attachment and “plug and play” integrated wiring technology, all on a stable, predictable closure surface. It drastically reduces the bulkiness of racking material, simplifies installation and increases the power per unit area by more than 35%. And unlike any system of its kind, PowerCap maximizes the landfill footprint with a unique slope technology so more of the site becomes an effective means of power generation.

PowerCap™ Patent Pending System Provides:

- **Increased Density**—Significantly higher power per acre for various surface slope angles
- **Lower Cost & Simple**—faster and easier installation
- **Patent Pending Attachment System**—no need for traditional racking
- **Highly Versatile, Aesthetic Design**—ultra thin and seamless integration as an array
- **Dual Glass Panels**—high efficiency multi-crystalline modules with proprietary encapsulate which lengthens performance timeline





Wind Tunnel testing of ClosureTurf® and PowerCap™

Geotechnically and Aerodynamically Cutting-Edge Technology

This cutting edge system has taken a different approach by innovating in the geotechnical engineering discipline to enhance the simplicity of both the structural and installation aspects of a solar array. Coupled with the proven technology of ClosureTurf, PowerCap has been tested extensively in wind tunnel labs for superior aerodynamic performance.

Extensive laboratory testing has been performed on ClosureTurf and PowerCap, including:

- Rainfall erosion
- Ultraviolet (UV) resistance
- Fire resistance
- Creep tests of ClosureTurf
- Interface shear strength test of ClosureTurf and PowerCap system
- Wind tunnel test of ClosureTurf and PowerCap system





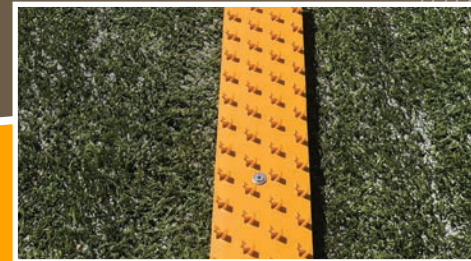
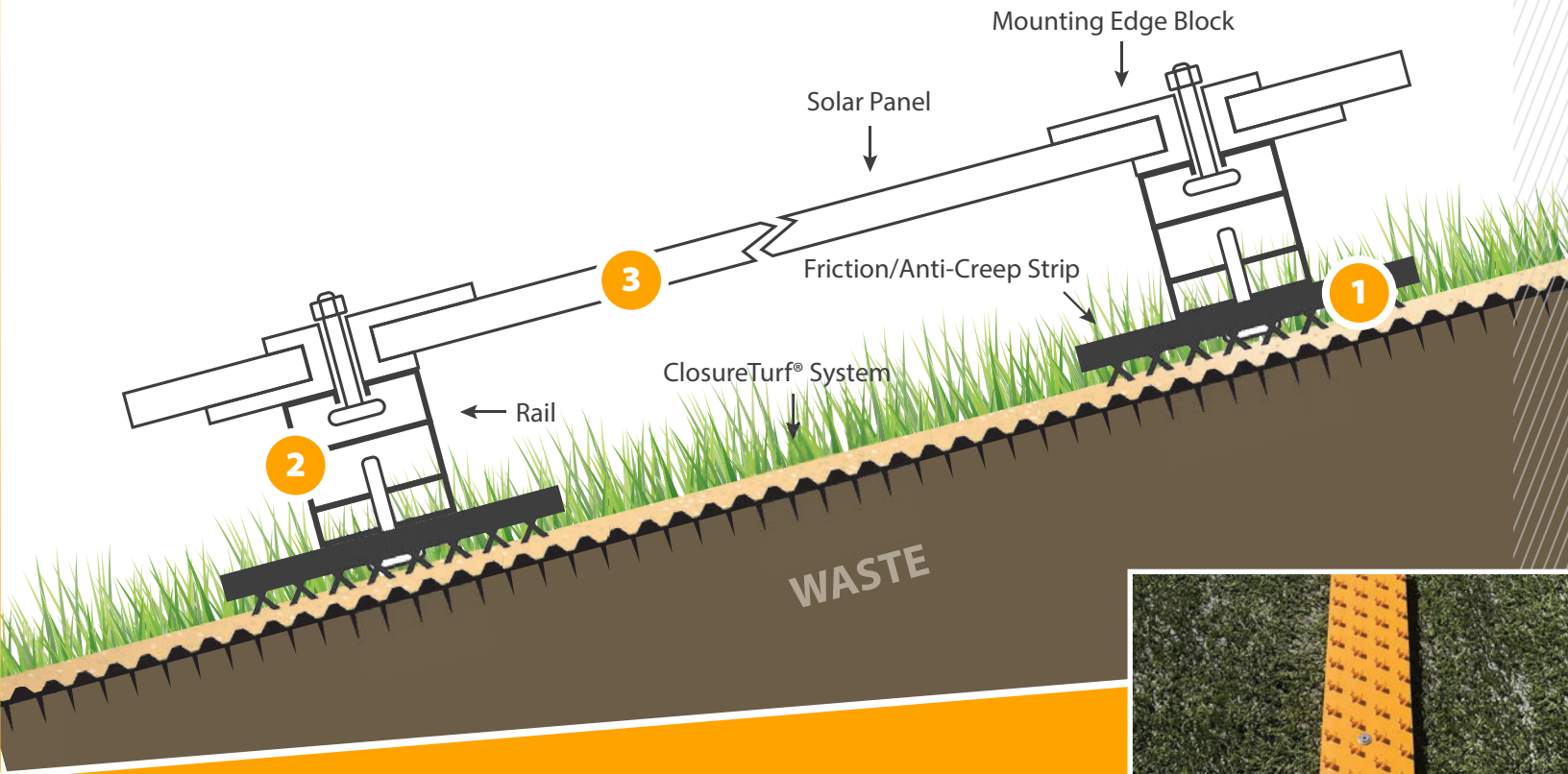
PowerCap[™] Surface and Slope Technology



The PowerCap system is a unique geotechnical approach to creating a highly stabilized solar system for landfills and impoundments. PowerCap provides a direct attachment method from the panel to the ClosureTurf surface with no penetration of the cover system. The entire system is based on friction. Friction strips are simply laid on the ClosureTurf surface (no penetrations), while the railing and dual glass panels are mechanically fastened to the strips. The unique, v-shaped anchor studs of the strips significantly increase the friction between the PowerCap and ClosureTurf systems, resisting any potential shearing or sliding on the top deck or slopes of the landfill. The friction strips also eliminate concern of the creeping (or mechanical expansion) of the underlying geomembrane component of the ClosureTurf system, because the PowerCap system is not mechanically connected to it.

ClosureTurf[®]: The Ideal Foundation

Installing solar generation on capped landfills has proven an effective way to deploy large systems on typically unused space. ClosureTurf is a patented, Subtitle D compliant final closure system that provides the ideal foundation for the PowerCap solar system. It provides a predictable benchmark of performance when capping environmental waste and significantly reduces the O&M expenses related to vegetation and erosion. There is no rebuilding of slopes, mowing or seeding required. Panels operate in a clean environment and are easily accessible. Best of all, ClosureTurf allows for installation of panels on slopes in addition to top decks for maximum output.



Friction/Anti-Creep Strips – Back Side Showing V-shaped Anchor Studs



Embedded Rail Attachment



Dual Glass Panels

PowerCap™ is a Three-Component System:

- 1 Friction/Anti-Creep Strips**
 - No penetration of geosynthetic material
 - Prevents sliding on slopes and shearing on the top deck
 - Friction strip ballast trays below the panel may offer additional factor of safety
- 2 Embedded Rail Attachment**
 - Gives the array a clean smooth look that allows it to conform to the subgrade
 - Has the capability to handle a large degree of differential settlement
- 3 Dual Glass Panels**
 - Tier 1, bankable PV modules
 - Longer service time up to 50 years
 - Edge block direct attachments allow the panels to be securely attached to the rail



Faster & Simpler Installation

Rackless integration of PowerCap provides many benefits to reduce costs and simplify installation. Fluctuating steel costs are eliminated. Grounding is not required but can be added. The system allows for integrated wiring which reduces Balance of System (BOS) hardware and simplifies installation. PowerCap also reduces engineering time, project management costs and associated overhead.

High Quality Dual Glass Panels

The PowerCap system typically consists of full silicon panels (glass, encapsulation and cell) manufactured by BYD (Build Your Dreams). The cells float in the silicon encapsulant making it more flexible and less rigid. This means a reduction in micro-cracking potential compared to Ethylene Vinyl Acetate (EVA) or PolyOlefin Encapsulant (POE). The panels are durable and allow for a high voltage stress of 1,500V and more panels per string. They are predictable at a .3% degradation annually in efficiency, and have up to a 40-year performance warranty for more power over a longer time period with no need for a frame on the panel.

BYD is 10% owned by Berkshire Hathaway Energy. The company is one of the world's largest maker of electric vehicles and battery energy storage technology with a Tier 1 presence in PV modules with its full silicon panel technology. They have 29 production bases around the world, over 220,000 employees and an annual revenue of over \$18 billion annually. In fact, BYD has supplied the largest dual glass solar panel installation of over 250 MWp located in Brazil. Financial strength, supply and quality are unparalleled.



Increased Density = More Power Per Area

The PowerCap™ system is capable of providing:

- Up to one MW per two acres
- Up to 300% larger capacity compared to a ballasted metal racking
- Up to 60% greater fill factor due to the slope and panel density per unit area
- More energy per unit of area compared with standard installation at optimal angle



A Smart Solution for:

Utilities

With federal regulations requiring the closing of power plants' coal ash impoundments, PowerCap provides an ideal opportunity for utilities to deploy solar generation alongside active or retired coal-fired plants. One of the biggest hurdles to utility-scale solar is finding suitable sites with suitable grid infrastructure for interconnection. By nature, this problem is alleviated when solar is sited at an existing or retired power plant and the impoundments have been capped with ClosureTurf®. Utilities benefit from PowerCap generation, from ClosureTurf environmental aspects and from showing communities the commitment to clean energy sources.

Industrial

Commonly known as monofills, industrial sites where byproducts are disposed and stored make an ideal site for PowerCap. Companies are able to combine renewable energy production for nearby facilities with resource-efficient land use for monofills that are already capped with ClosureTurf.

Municipal Solid Waste

Landfill owners are given the opportunity to generate revenue from what might be otherwise undevelopable land. Such sites are usually located near roads and electricity distribution infrastructure. Areas with larger populations tend to have high energy demand. Opportunities exist to lease the land, sell energy to a local utility and/or generate state renewable energy credits (SRECs). For sites already capped with ClosureTurf and future closures slated for ClosureTurf, PowerCap system is an ideal solution.

Mining

Tailings, also called tailing ponds, are the materials left over after the process of separating the valuable portion from an uneconomic portion of an ore. The pond is generally impounded with a dam, and known as a tailings impoundment. Tailings ponds are used to store waste made from separating minerals from rocks (slurry) produced from mining. Companies that utilize ClosureTurf on its tailing impoundments for a capping medium will be able to add a renewable energy alternative with PowerCap. This will allow mines to generate energy at their facility from waste sites.



770.777.0386 • watershedgeo.com

WG WatershedGeo®
Unearthing Solutions

POWERCAP® and CLOSURETURF® are U.S. registered trademarks which designate a product from Watershed Geosynthetics, LLC. This product is the subject of issued U.S. and foreign patents and/or pending U.S. and foreign patent applications. All information, recommendations, and suggestions appearing in this literature concerning the use of our products are based upon tests and data believed to be reliable; however, this information should not be used or relied upon for any specific application without independent professional examination and verification of its accuracy, suitability and applicability. Since the actual use by others is beyond our control, no guarantee or warranty of any kind, expressed or implied, is made by Watershed Geosynthetics LLC as to the effects of such use or the results to be obtained, nor does Watershed Geosynthetics LLC assume any liability in connection herewith. Any statement made herein may not be absolutely complete since additional information may be necessary or desirable when particular or exceptional conditions or circumstances exist or because of applicable laws or government regulations. Nothing herein is to be construed as permission or as a recommendation to infringe any patent.